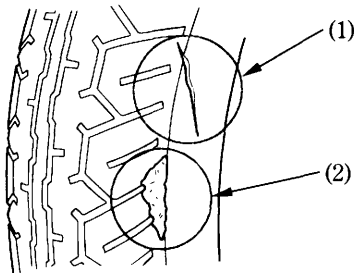


## Cracks and Damage

Check the tyre tread and sidewalls for conspicuous cracks (1) or other damage (2).

### ⚠ WARNING

\* Tyres that are cracked or damaged are a safety hazard. They may lose pressure rapidly, and a loss of vehicle control could result.



(1) Crack

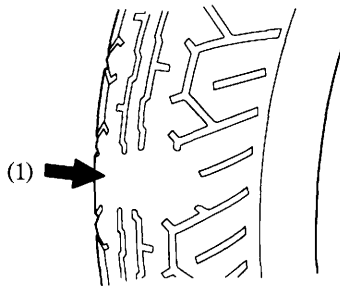
(2) Damage

## Abnormal Wear

Check for abnormal wear (1) of the tyre tread.

### ⚠ WARNING

\* Abnormal wear will adversely affect traction and handling.



(1) Abnormal wear