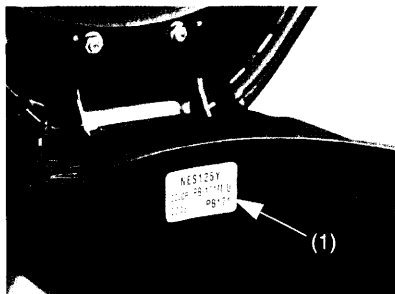


COLOR LABEL

The color label (1) is attached to the center compartment. It is helpful when ordering replacement parts. Record the color code here for your reference.

COLOR: _____

CODE: _____



(1) Color label

MAINTENANCE PRECAUTIONS

⚠ WARNING

- If your scooter is overturned or involved in an collision, inspect control levers, brake hoses, calipers, accessories and other vital parts for damage. Do not ride the scooter if damage impairs safe riding. Have your Honda dealer inspect the major components including frame, suspension, and steering parts for misalignment and damage that you may not be able to detect.
- Before carrying out any maintenance, switch off the engine and place the scooter on the center stand on firm flat ground.
- Only use original Honda parts or an equivalent for maintenance and repairs. Parts of a lower quality may effect the safety of the scooter.