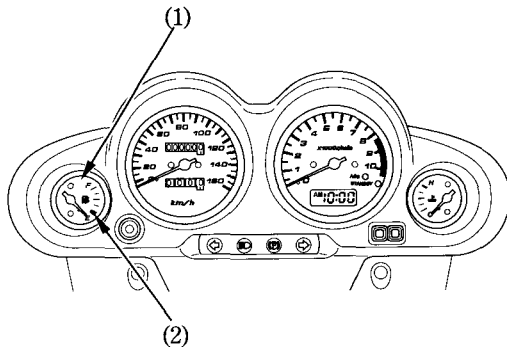


Fuel Gauge (1)

When the gauge needle enters the red band (2), fuel will be low and you should refill the tank as soon as possible.

The amount of fuel left in the tank when the needle enters the red band and with the vehicle set upright is approximately:

1.6 l (0.42 US gal , 0.35 Imp gal)



- (1) Fuel gauge
- (2) Red band