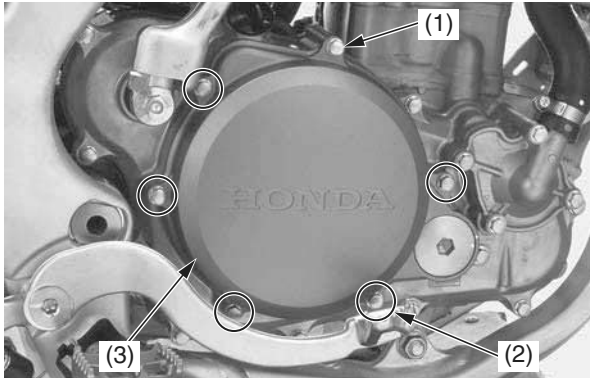


# Clutch System

## Clutch Disc/Plate Removal

1. Drain the transmission oil (page 53).
2. Remove the clutch cover bolt A (1), clutch cover bolts B (2), and clutch cover (3).

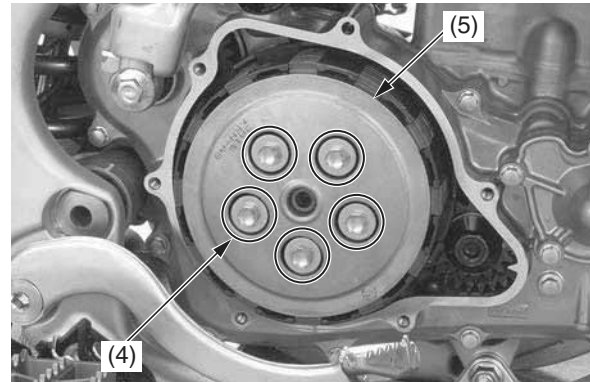


(1) clutch cover bolt A (3) clutch cover  
(2) clutch cover bolts B

3. Remove the five clutch spring bolts and springs (4).

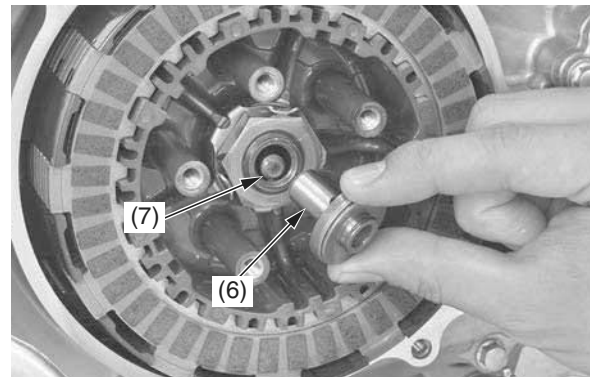
Loosen the bolts in a crisscross pattern in two or three progressive steps.

4. Remove the clutch pressure plate (5).



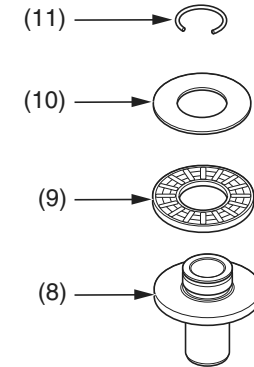
(4) clutch spring bolts and springs  
(5) clutch pressure plate

5. Remove the clutch lifter assembly (6) first, then remove the clutch lifter rod (7).



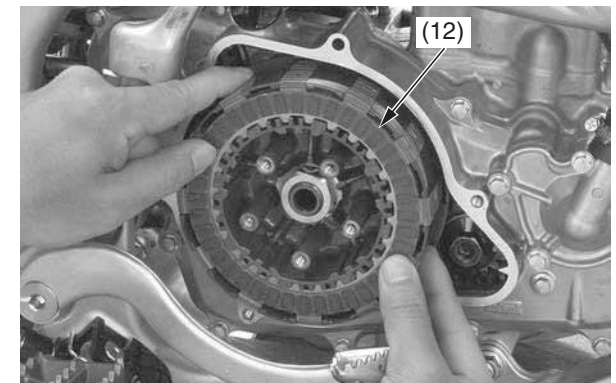
(6) clutch lifter assembly (7) clutch lifter rod

6. Disassemble the clutch lifter (8), needle bearing (9) and washer (10) by removing the clip (11). Turn the needle bearing with your finger. The needle bearing should turn smoothly and quietly. Replace the needle bearing and washer if the needle bearing does not turn smoothly.



(8) clutch lifter (10) washer  
(9) needle bearing (11) clip

7. Remove the eight clutch discs, seven clutch plates, judder spring and spring seat (12).



(12) clutch discs, clutch plates, judder spring and spring seat