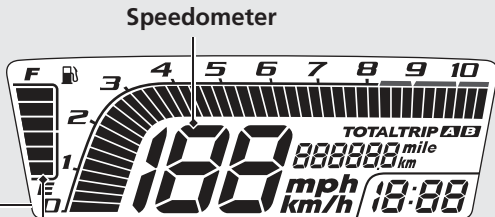


Display Check

When the ignition switch is turned on, all the mode and digital segments will show, and the tachometer segment progress to maximum scale and then disappear.

If any part of these displays does not come on when it should, have your dealer check for problems.



Fuel gauge

Remaining fuel when only 1st (E) segment starts flashing:
approximately 0.383 US gal (1.45 liters)

**If the fuel gauge indicators repeat flashing
or turned off:** (P76)

