

# Emission Control Systems (USA & Canada only)

---

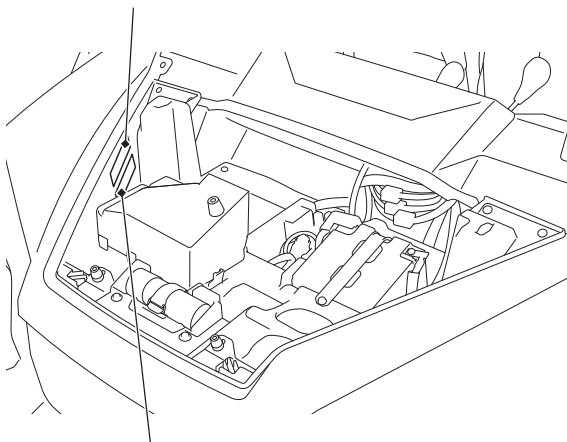
## Exhaust Emission Requirements

The U.S. Environmental Protection Agency (EPA), the California Air Resources Board (CARB), and Environment and Climate Change Canada (ECCC) require that your SXS comply with applicable exhaust emissions standards during its useful life, when operated and maintained according to the instructions provided.

The Vehicle Emission Control Information Label is attached on the right front side of the front fender under the front hood.

## RIGHT FRONT SIDE OF THE FRAME

vehicle emission control information label  
(Canada model only)



vehicle emission control information label