

Gauges, Indicators & Displays

Odometer

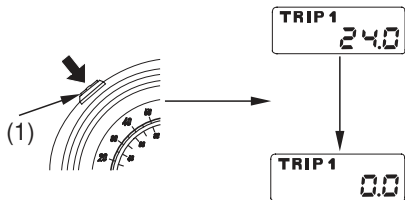
The odometer shows the total miles or kilometers ridden.

Tripmeter 1 & 2

The tripmeter shows number of miles or kilometers ridden since you last reset the tripmeter.

The tripmeter has two sub modes, “TRIP 1” and “TRIP 2”.

To reset the tripmeter, push and hold the odometer/tripmeter/digital clock select and reset button (1) for more than 2 seconds when the display in the “TRIP 1” or “TRIP 2” mode.



(1) odometer/tripmeter/digital clock select and reset button