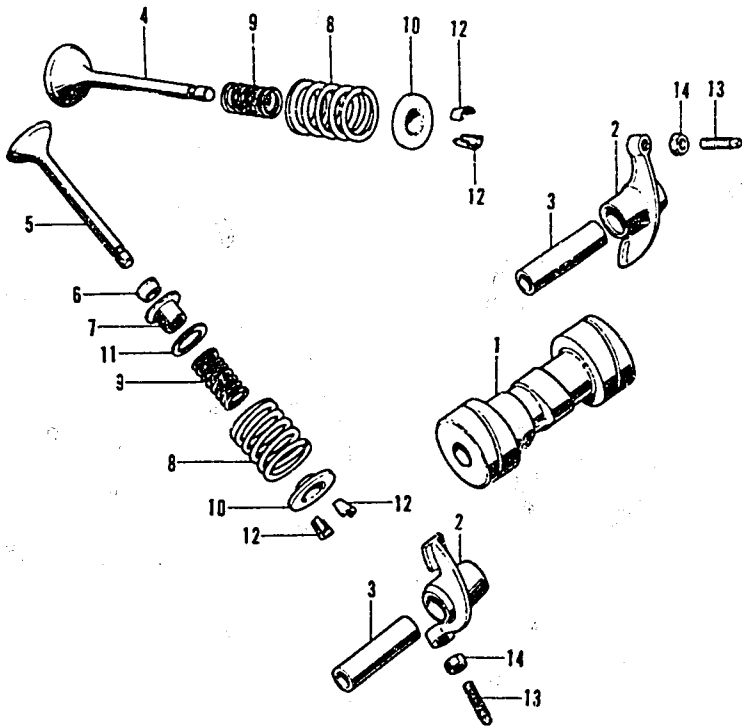


# CAMSHAFT • VALVE



E23098003

K1 = CT70K1  
K2 = CT70K2

Ref. No.	BLOCK NO. E-3 DESCRIPTION	CT70		ENGINE SERIAL NUMBER		QTY REQ	PART NUMBER	HONDA CODE
		K1	K2	FROM	TO			
		K1	K2					
1	CAMSHAFT	K1	K2	-----	-----	1	14101-041-020	0181487
	CAMSHAFT	K1	K2	-----	-----	1	14101-041-030	0919670
2	ARM, VALVE ROCKER	K1	K2	-----	-----	2	14431-035-000	0059898
	ARM, VALVE ROCKER	K1	K2	-----	-----	2	14431-035-010	0951236
	ARM, VALVE ROCKER	K1	K2	-----	-----	2	14431-035-020	2928745
3	SHAFT, VALVE ROCKER ARM	K1	K2	-----	-----	1	14451-035-000	0069906
4	VALVE, IN.	K1	K2	-----	-----	1	14711-087-000	0185108
5	VALVE, EX.	K1	K2	-----	2109800	1	14721-087-000	0185116
	VALVE, EX.	K1	K2	2109801	-----	1	14721-087-010	0335885
	VALVE, EX.	K1	K2	-----	2109800	1	14721-089-000	0113597
6	SEAL, VALVE STEM	K1	K2	-----	-----	1	14730-028-013	0241091
7	CAP, VALVE STEM SEAL	K1	K2	-----	-----	1	14731-028-000	0115998
8	SPRING, VALVE OUTER	K1	K2	-----	-----	2	14751-035-600	0083030
9	SPRING, VALVE INNER	K1	K2	-----	-----	2	14761-035-000	0069948
10	RETAINER, VALVE SPRING	K1	K2	-----	-----	2	14771-035-600	0083043
11	SEAT, VALVE SPRING INNER	K1	K2	-----	-----	1	14776-028-000	0115972
12	COTTER, VALVE	K1	K2	-----	-----	4	14781-001-010	0001891
13	SCREW, TAPPET ADJUSTING	K1	K2	-----	-----	2	90012-200-000	0023978
	SCREW, TAPPET ADJUSTING	K1	K2	-----	-----	2	90012-333-000	0294819
14	NUT, TAPPET ADJUSTING	K1	K2	-----	-----	2	90206-001-000	0004598

# CONTENTS

TITLE	PAGE	GRID
AIR CLEANER	60	D11
ALTERNATOR	10	B5
BATTERY	88	F1
BRAKE PEDAL	80	E9
CAM CHAIN TENSIONER	14	B7
CAMSHAFT	8	B4
CARBURETOR	38	C7
CHAIN CASE	78	E8
CHANGE PEDAL	98	F6
CLUTCH	18	B9
CRANKCASE	34	C5
CRANKCASE COVER L	10	B5
CRANKCASE COVER R	16	B8
CRANKCASE PROTECTOR	92	F3
CRANKSHAFT	22	B11
CYLINDER	6	B3
CYLINDER HEAD	6	B3
CYLINDER HEAD COVER	2	B1
FENDER, FR.	46	D4
FENDER, RR.	64	E11
FORK, FR.	50	D6
FRAME	92	F3
FUEL TANK	64	E1
GEARSHIFT	26	C1
HANDLEBAR	40	D1
HEADLIGHT	44	D3
HORN	46	D4
INLET PIPE	2	B1
KICK ARM	98	F6
KICK STARTER	32	C4
MUFFLER	66	E2
OIL PUMP	34	C5
PISTON	22	B11
SEAT	60	D11
SHOCK ABSORBER, RR.	76	E7
SIDE STAND	80	E9
SPARK PLUG	2	B1
SPEEDOMETER	44	D3
STEERING STEM	46	D4
STEP	80	E9
SWINGARM	78	E8
TAILLIGHT	84	E11
TOOL SET	96	F5
TRANSMISSION	30	C3
VALVE	8	B4
WHEEL, FR.	54	D8
WHEEL, RR.	70	E4
WIRE HARNESS	88	F1

GRID

**B4**

CT70K1 ENGINE NO.; CT70E-2000001 TO SUBSEQUENT  
 CT70K1 FRAME NO.; CT70-2000001 TO SUBSEQUENT  
 CT70K2 ENGINE NO.; CT70E-2100001 TO SUBSEQUENT  
 CT70K2 FRAME NO.; CT70-2100001 TO SUBSEQUENT

AMERICAN HONDA MOTOR CO., LTD. 1993