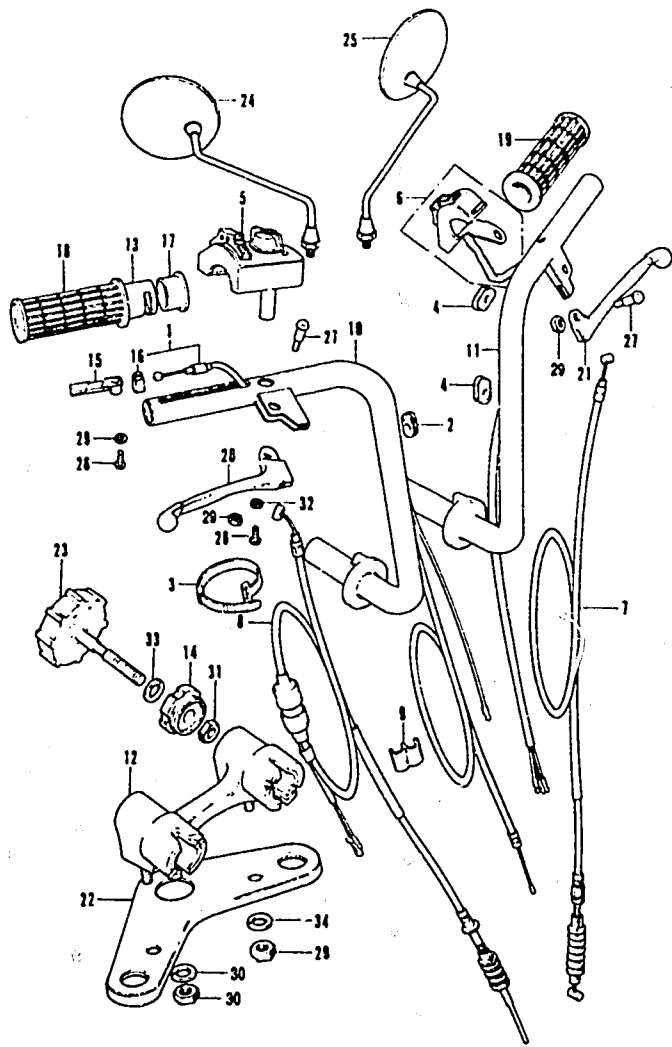


HANDLEBAR



F23098001

K1 = CT70K1
K2 = CT70K2

Ref. No.	BLOCK NO. DESCRIPTION	CT70		FRAME SERIAL NUMBER		QTY REQ	PART NUMBER	HONDA CODE
		K1	K2	FROM	TO			
		1	2					
23	23 KNOB COMP., HANDLE HOLDER	K1	K2	-----	-----	2	53740-098-970	0267302
24	24 MIRROR, R.	K1	K2	2105001	-----	1	88110-123-750	0335919
	MIRROR, R.	K1	K2	2105001	-----	1	88110-126-751	0629626
	MIRROR, R.	K1	K2	2105001	-----	1	88110-178-000	2088979
25	25 MIRROR, L.	K1	K2	2105001	-----	1	88120-126-750	0335927
	MIRROR, L.	K1	K2	2105001	-----	1	88120-126-751	0637041
	MIRROR, L.	K1	K2	2105001	-----	1	88120-147-671	0486563
	MIRROR, L.	K1	K2	2105001	-----	1	88120-178-000	1835909
26	26 SCREW, THROTTLE GRIP MOUNT	K1	K2	-----	-----	1	90101-063-000	0169128
27	27 BOLT, HANDLE LEVER PIVOT	K1	K2	-----	-----	2	90114-063-000	0169144
28	28 SCREW, PAN, 3X12	K1	K2	-----	-----	1	93500-03012-0A	0182154
29	29 NUT, HEX., 5MM	K1	K2	-----	-----	2	94001-05000-0S	0156885
30	30 NUT, HEX., 10MM	K1	K2	-----	-----	2	94001-10000-0S	0145391
31	31 NUT, HEX., 8MM	K1	K2	-----	-----	2	94002-08000-0S	0156075
32	32 WASHER, SPRING, 3MM	K1	K2	-----	-----	1	94111-03000	0058941
33	33 WASHER, SPRING, 8MM	K1	K2	-----	-----	2	94111-08000	0058982
34	34 WASHER, SPRING, 8MM	K1	K2	-----	-----	2	94111-10000	0059006

CONTENTS

TITLE	PAGE	GRID
AIR CLEANER	60	D11
ALTERNATOR	10	B5
BATTERY	88	F1
BRAKE PEDAL	80	E9
CAM CHAIN TENSIONER	14	B7
CAMSHAFT	8	B4
CARBURETOR	38	C7
CHAIN CASE	78	E8
CHANGE PEDAL	98	F6
CLUTCH	18	B9
CRANKCASE	34	C5
CRANKCASE COVER, L	10	B5
CRANKCASE COVER, R	16	B8
CRANKCASE PROTECTOR	92	F3
CRANKSHAFT	22	B11
CYLINDER	6	B3
CYLINDER HEAD	6	B3
CYLINDER HEAD COVER	2	B1
FENDER, FR.	46	D4
FENDER, RR.	84	E11
FORK, FR.	50	D6
FRAME	92	F3
FUEL TANK	64	E1
GEARSHIFT	26	C1
HANDLEBAR	40	D1
HEADLIGHT	44	D3
HORN	46	D4
INLET PIPE	2	B1
KICK ARM	98	F6
KICK STARTER	32	C4
MUFFLER	66	E2
OIL PUMP	34	C5
PISTON	22	B11
SEAT	60	D11
SHOCK ABSORBER, RR	76	E7
SIDE STAND	80	E9
SPARK PLUG	2	B1
SPEEDOMETER	44	D3
STEERING STEM	46	D4
STEP	80	E9
SWINGARM	78	E8
TAILLIGHT	84	E11
TOOL SET	96	F5
TRANSMISSION	30	C3
VALVE	8	B4
WHEEL, FR.	54	D8
WHEEL, RR.	70	E4
WIRE HARNESS	88	F1

42 AMERICAN HONDA MOTOR CO., LTD. 1993
 CT70K1 ENGINE NO.; CT70E-2000001 TO SUBSEQUENT
 CT70K1 FRAME NO.; CT70-2000001 TO SUBSEQUENT
 CT70K2 ENGINE NO.; CT70E-2100001 TO SUBSEQUENT
 CT70K2 FRAME NO.; CT70-2100001 TO SUBSEQUENT