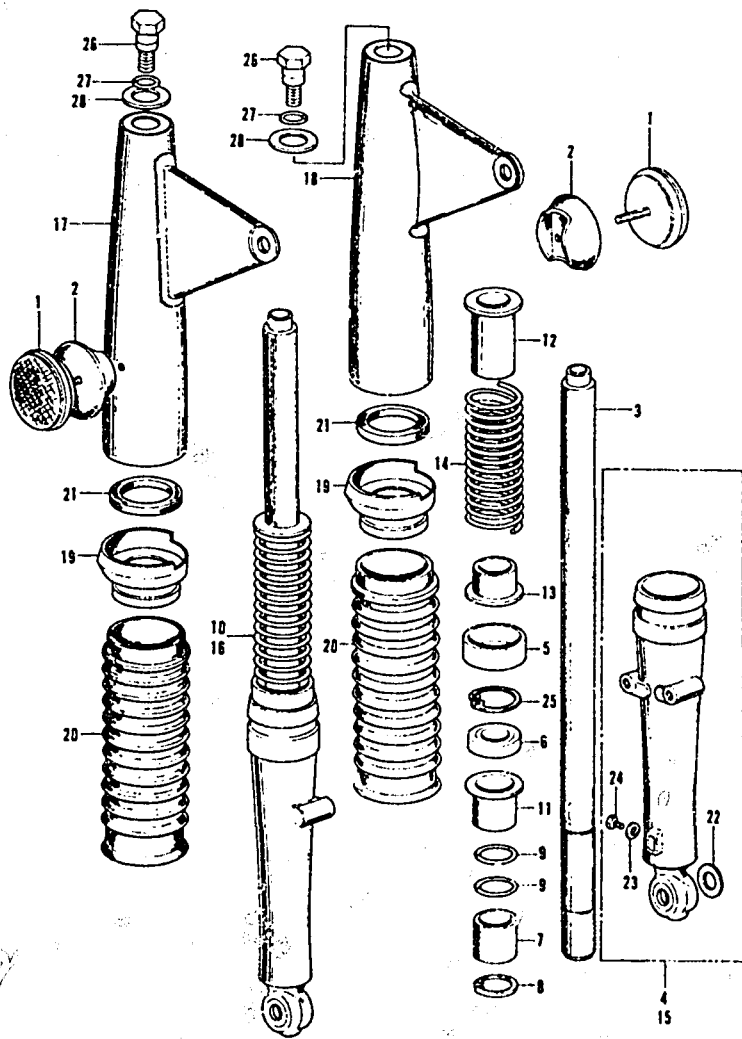


FRONT FORK



F23098004

K1 = CT70K1
K2 = CT70K2

Ref. No.	BLOCK NO. DESCRIPTION	CT70		FRAME SERIAL NUMBER	REQ	PART NUMBER	HONDA CODE
		K1	K2				
		FROM	TO				
24	BOLT, HEX., 6X8	K1	K2	-----	2	92000-06008	0054155
	BOLT, HEX., 6X8	K1	K2	-----	2	92000-06008-0A	0724377
	BOLT, HEX., 6X8	K1	K2	-----	2	92101-06008-0A	2504868
25	CIRCLIP, INTERNAL, 35MM	K1	K2	-----	2	94536-35120	0270645
26	BOLT, FORK A	K1	K2	-----	2	94605-10101	0250555
27	WASHER, FORK BOLT, 13MM	K1	K2	-----	2	94606-13000	0270652
	WASHER, SHOCK BOLT, 13MM	K1	K2	-----	2	94606-13001	0361816
28	O-RING, 8.4X2.4	K1	K2	-----	2	94608-10000	0250563

CONTENTS

TITLE	PAGE	GRID
AIR CLEANER	60	D11
ALTERNATOR	10	B5
BATTERY	88	F1
BRAKE PEDAL	80	E9
CAM CHAIN TENSIONER	14	B7
CAMSHAFT	8	B4
CARBURETOR	38	C7
CHAIN CASE	78	E8
CHANGE PEDAL	98	F6
CLUTCH	18	B9
CRANKCASE	34	C5
CRANKCASE COVER, L	10	B5
CRANKCASE COVER, R	16	B8
CRANKCASE PROTECTOR	92	F3
CRANKSHAFT	22	B11
CYLINDER	6	B3
CYLINDER HEAD	6	B3
CYLINDER HEAD COVER	2	B1
FENDER, FR	46	D4
FENDER, RR	84	E11
FORK, FR	50	D6
FRAME	92	F3
FUEL TANK	64	E1
GEARSHIFT	26	C1
HANDLEBAR	40	D1
HEADLIGHT	44	D3
HORN	46	D4
INLET PIPE	2	B1
KICK ARM	98	F6
KICK STARTER	32	C4
MUFFLER	66	E2
OIL PUMP	34	C5
PISTON	22	B11
SEAT	60	D11
SHOCK ABSORBER, RR	76	E7
SIDE STAND	80	E9
SPARK PLUG	2	B1
SPEEDOMETER	44	D3
STEERING STEM	46	D4
STEP	80	E9
SWINGARM	78	E8
TAILLIGHT	84	E11
TOOL SET	96	F5
TRANSMISSION	30	C3
VALVE	8	B4
WHEEL, FR	54	D8
WHEEL, RR	70	E4
WIRE HARNESS	88	F1

GRID

D7

52 AMERICAN HONDA MOTOR CO., LTD. 1993
 CT70K1 ENGINE NO.; CT70E-2000001 TO SUBSEQUENT
 CT70K1 FRAME NO.; CT70-2000001 TO SUBSEQUENT
 CT70K2 ENGINE NO.; CT70E-2100001 TO SUBSEQUENT
 CT70K2 FRAME NO.; CT70-2100001 TO SUBSEQUENT

D7

AMERICAN HONDA MOTOR CO., LTD. 1993 53