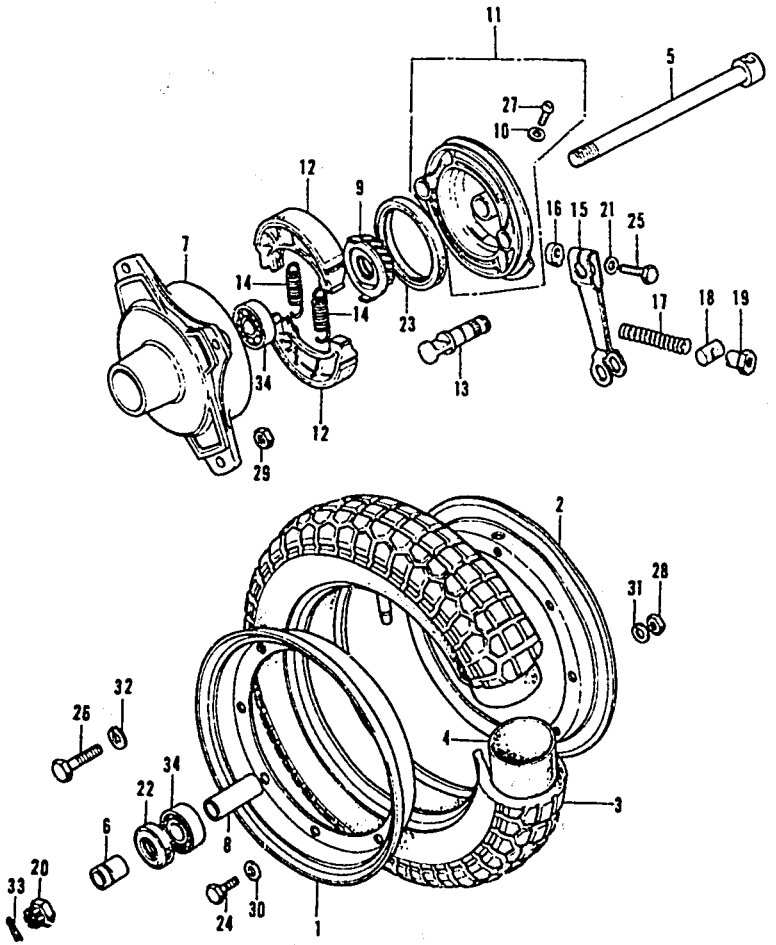


**FRONT WHEEL**



F23098005

K1 = CT70K1  
K2 = CT70K2

Ref. No.	BLOCK NO. DESCRIPTION	CT70		QTY REQ	PART NUMBER	HONDA CODE
		K1	K2			
		FRAME SERIAL NUMBER				
		FROM	TO			
17	SPRING, FR. BRAKE ARM	K1	K2	1	45437-001-000	0010207
18	JOINT, BRAKE ARM	K1	K2	1	45461-001-000	0010199
	JOINT A, BRAKE ARM	K1	K2	1	95015-31000	0271064
	JOINT A, BRAKE ARM	K1	K2	1	95015-31001	0433961
19	NUT, RR. BRAKE ADJUSTING	K1	K2	1	45462-028-000	0118836
	NUT A, BRAKE ROD ADJUSTING	K1	K2	1	95015-41000	0301499
20	NUT, AXLE	K1	K2	1	90306-098-000	0246900
21	WASHER, RR. BRAKE ARM	K1	K2	1	90525-001-000	0094859
22	OIL SEAL, 21X35X7	K1	K2	1	90755-229-000	0120188
	OIL SEAL, 21X37X7 (ARAI)	K1	K2	1	90755-229-003	0359125
	OIL SEAL, 21X37X7 (NOK)	K1	K2	1	90755-229-005	0709774
23	SEAL, OIL	K1	K2	1	91251-030-000	0021311
24	BOLT, HEX., 6X12	K1	K2	4	92000-06012	0054197
	BOLT, HEX., 6X12	K1	K2	4	92101-06012	2738821
	BOLT, HEX., 6X12	K1	K2	4	92101-06012-0A	3591500
25	BOLT, HEX., 6X25	K1	K2	1	92000-06025	0054320
	BOLT, HEX., 6X25	K1	K2	1	92101-06025-0A	2206563
26	BOLT, HEX., 8X25	K1	K2	4	92000-08025-0A	0159350
	BOLT, HEX., 8X25	K1	K2	4	92101-08025-0A	2651537
27	SCREW, PAN, 6X5	K1	K2	1	93500-06005	0057372
28	NUT, HEX., 6MM	K1	K2	4	90310-KA3-711	1553916
	NUT, HEX., 6MM	K1	K2	4	94000-06000-0S	1391283
	NUT, HEX., 6MM	K1	K2	4	94001-06000	0058016
	NUT, HEX., 6MM	K1	K2	4	94001-06000-0S	0156067
	NUT, HEX., 6MM	K1	K2	4	94001-06008-0S	2829414
	NUT, HEX., 6MM	K1	K2	4	94001-06200-0S	2043255
	NUT, HEX., 6MM	K1	K2	4	94030-06000	1642693
29	NUT, HEX., 8MM	K1	K2	4	94001-08003-0S	0167338
30	WASHER, PLAIN, 6MM	K1	K2	4	94101-06000	0059071
	WASHER, PLAIN, 6MM	K1	K2	4	94101-06080	3136074
	WASHER, PLAIN, 6MM	K1	K2	4	94101-06800	0345900
31	WASHER, SPRING, 6MM	K1	K2	4	94111-06000	0058974

**CONTENTS**

TITLE	PAGE	GRID
AIR CLEANER	60	D11
ALTERNATOR	10	B5
BATTERY	88	F1
BRAKE PEDAL	80	E9
CAM CHAIN TENSIONER	14	B7
CAMSHAFT	8	B4
CARBURETOR	38	C7
CHAIN CASE	78	E8
CHANGE PEDAL	08	F6
CLUTCH	18	B9
CRANKCASE	34	C5
CRANKCASE COVER L	10	B5
CRANKCASE COVER R	16	B8
CRANKCASE PROTECTOR	92	F3
CRANKSHAFT	22	B11
CYLINDER	6	B3
CYLINDER HEAD	6	B3
CYLINDER HEAD COVER	2	B1
FENDER FR.	46	D4
FENDER RR.	84	E11
FORK FR.	50	D6
FRAME	92	F3
FUEL TANK	64	E1
GEARSHIFT	26	C1
HANDLEBAR	40	D1
HEADLIGHT	44	D3
HORN	46	D4
INLET PIPE	2	B1
KICK ARM	98	F6
KICK STARTER	32	C4
MUFFLER	66	E2
OIL PUMP	34	C5
PISTON	22	B11
SEAT	60	D11
SHOCK ABSORBER, RR.	76	E7
SIDE STAND	80	E9
SPARK PLUG	2	B1
SPEEDOMETER	44	D3
STEERING STEM	46	D4
STEP	80	E9
SWINGARM	78	E8
TAILLIGHT	84	E11
TOOL SET	96	F5
TRANSMISSION	30	C3
VALVE	8	B4
WHEEL, FR.	54	D8
WHEEL, RR.	70	E4
WIRE HARNESS	88	F1

56 © AMERICAN HONDA MOTOR CO., LTD. 1993  
 CT70K1 ENGINE NO.; CT70E-2000001 TO SUBSEQUENT  
 CT70K1 FRAME NO.; CT70-2000001 TO SUBSEQUENT  
 CT70K2 ENGINE NO.; CT70E-2100001 TO SUBSEQUENT  
 CT70K2 FRAME NO.; CT70-2100001 TO SUBSEQUENT

© AMERICAN HONDA MOTOR CO., LTD. 1993 57