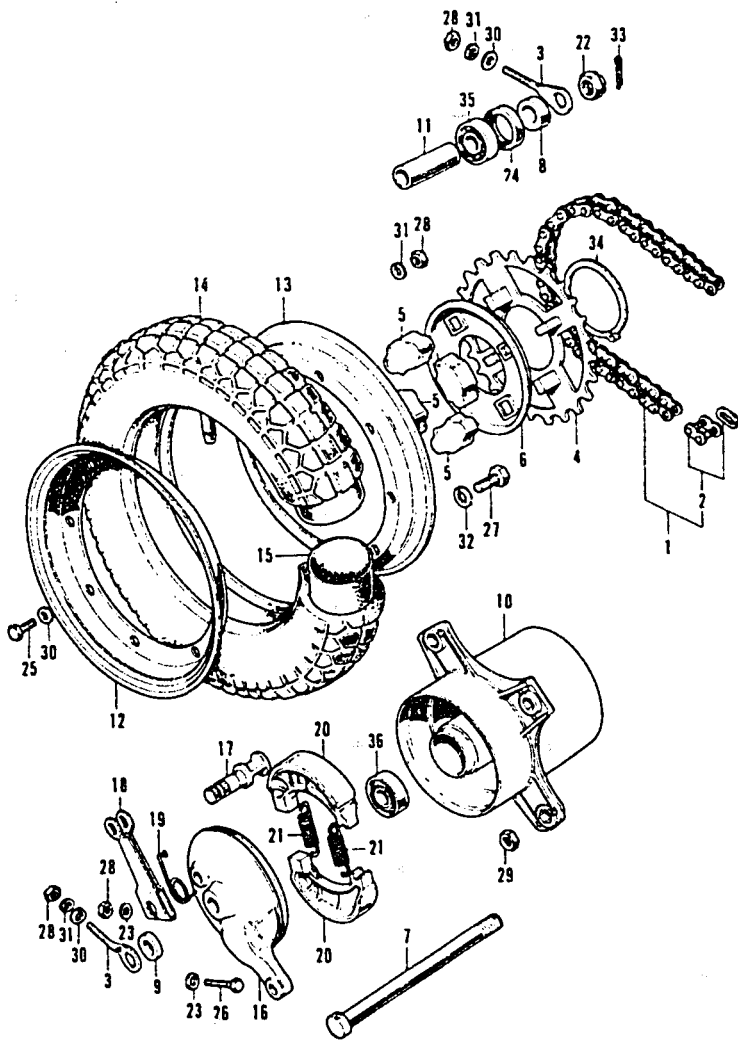


REAR WHEEL



F23088009

K1 - CT70K1
K2 - CT70K2

CT70

Ref. No.	BLOCK NO. DESCRIPTION	F-9	K		FRAME SERIAL NUMBER		QTY REQ	PART NUMBER	HONDA CODE
			K1	K2	FROM	TO			
1	CHAIN, DRIVE		K1	K2	-----	-----	1	405W3-GB2-505	3527223
	CHAIN, DRIVE (RK420-86RJ) (TAKASAGO)		K1	K2	-----	-----	1	40530-GB3-722	1548577
	CHAIN, DRIVE (RK420-86RJ) (TAKASAGO)		K1	K2	-----	-----	1	40530-098-971	0267773
	CHAIN, DRIVE (DAIDO) (86L)		K1	K2	-----	-----	1	40530-098-972	0267781
	CHAIN, DRIVE (TAKASAGO) (RK420M-86RJ)		K1	K2	-----	-----	1	40530-098-973	1921469
	CHAIN, DRIVE (86L DAIDO)		K1	K2	-----	-----	1	40530-098-974	1456813
2	JOINT, DRIVE CHAIN (TAKASAGO)		K1	K2	-----	-----	1	40531-035-005	2945665
	JOINT, DRIVE CHAIN		K1	K2	-----	-----	1	40531-045-671	0182105
	JOINT, DRIVE CHAIN (DAIDO)		K1	K2	-----	-----	1	40531-098-003	0247882
	JOINT, DRIVE CHAIN (TAKASAGO)		K1	K2	-----	-----	1	40531-098-005	0258491
	JOINT, DRIVE CHAIN (DAIDO)		K1	K2	-----	-----	1	40531-120-003	0288019
	JOINT, DRIVE CHAIN (TAKASAGO)		K1	K2	-----	-----	1	40531-150-005	0722322
	JOINT, DRIVE CHAIN (DAIDO)		K1	K2	-----	-----	1	40531-153-003	0462523
3	ADJUSTER, R. DRIVE CHAIN		K1	K2	-----	-----	2	40543-063-000	0168377
	ADJUSTER S, R. CHAIN		K1	K2	-----	-----	2	95014-10010	0391383
4	SPROCKET, FINAL DRIVEN (35T)		K1	K2	-----	-----	1	41201-098-970	0267716
	SPROCKET, FINAL DRIVEN (35T)		K1	K2	-----	-----	1	41201-126-920	0674838
5	DAMPER, RR. WHEEL		K1	K2	-----	-----	4	41241-051-000	0118083
6	COVER, RR. WHEEL DAMPER		K1	K2	-----	-----	1	41245-051-000	0118091
7	AXLE, RR. WHEEL		K1	K2	-----	-----	1	42301-098-000	0246850
8	COLLAR, RR. WHEEL SIDE		K1	K2	-----	-----	1	42304-098-000	0118117
9	COLLAR, RR. BRAKE PANEL SIDE		K1	K2	-----	-----	1	42313-098-000	0114959
10	HUB COMP., RR. WHEEL (CLOUD SILVER)		K1	K2	-----	-----	1	42601-098-010AU	0250936
	HUB, RR. WHEEL		K1	K2	-----	-----	1	42601-098-0102B	3919032
11	COLLAR, RR. AXLE DISTANCE		K1	K2	-----	-----	1	42620-098-000	0114975
12	RIM, R. WHEEL (CLOUD SILVER)		K1	K2	-----	-----	1	42701-098-000AU	0114983
	RIM, R. WHEEL		K1	K2	-----	-----	1	42701-098-8512A	0696351
	RIM, R. WHEEL *NH35M* (YUNO) (CLOUD SILVER METALLIC)		K1	K2	-----	-----	1	42701-098-8532A	0742726

CONTENTS

TITLE	PAGE	GRID
AIR CLEANER	60	D11
ALTERNATOR	10	B5
BATTERY	88	F1
BRAKE PEDAL	80	E9
CAM CHAIN TENSIONER	14	B7
CAMSHAFT	8	B4
CARBURETOR	38	C7
CHAIN CASE	78	E8
CHANGE PEDAL	98	F6
CLUTCH	18	B9
CRANKCASE	34	C5
CRANKCASE COVER L	10	B5
CRANKCASE COVER R	16	B8
CRANKCASE PROTECTOR	92	F3
CRANKSHAFT	22	B11
CYLINDER	6	B3
CYLINDER HEAD	6	B3
CYLINDER HEAD COVER	2	B1
FENDER, FR.	46	D4
FENDER, RR.	84	E11
FORK, FR.	50	D6
FRAME	92	F3
FUEL TANK	64	E1
GEARSHIFT	26	C1
HANDLEBAR	40	D1
HEADLIGHT	44	D3
HORN	46	D4
INLET PIPE	2	B1
KICK ARM	98	F6
KICK STARTER	32	C4
MUFFLER	66	E2
OIL PUMP	34	C5
PISTON	22	B11
SEAT	60	D11
SHOCK ABSORBER, RR.	76	E7
SIDE STAND	80	E9
SPARK PLUG	2	B1
SPEEDOMETER	44	D3
STEERING STEM	46	D4
STEP	80	E9
SWINGARM	78	E8
TAILLIGHT	84	E11
TOOL SET	96	F5
TRANSMISSION	30	C3
VALVE	8	B4
WHEEL, FR.	54	D8
WHEEL, RR.	70	E4
WIRE HARNESS	88	F1

GRID

E4

CT70K1 ENGINE NO.; CT70E-2000001 TO SUBSEQUENT
CT70K1 FRAME NO.; CT70-2000001 TO SUBSEQUENT
CT70K2 ENGINE NO.; CT70E-2100001 TO SUBSEQUENT
CT70K2 FRAME NO.; CT70-2100001 TO SUBSEQUENT