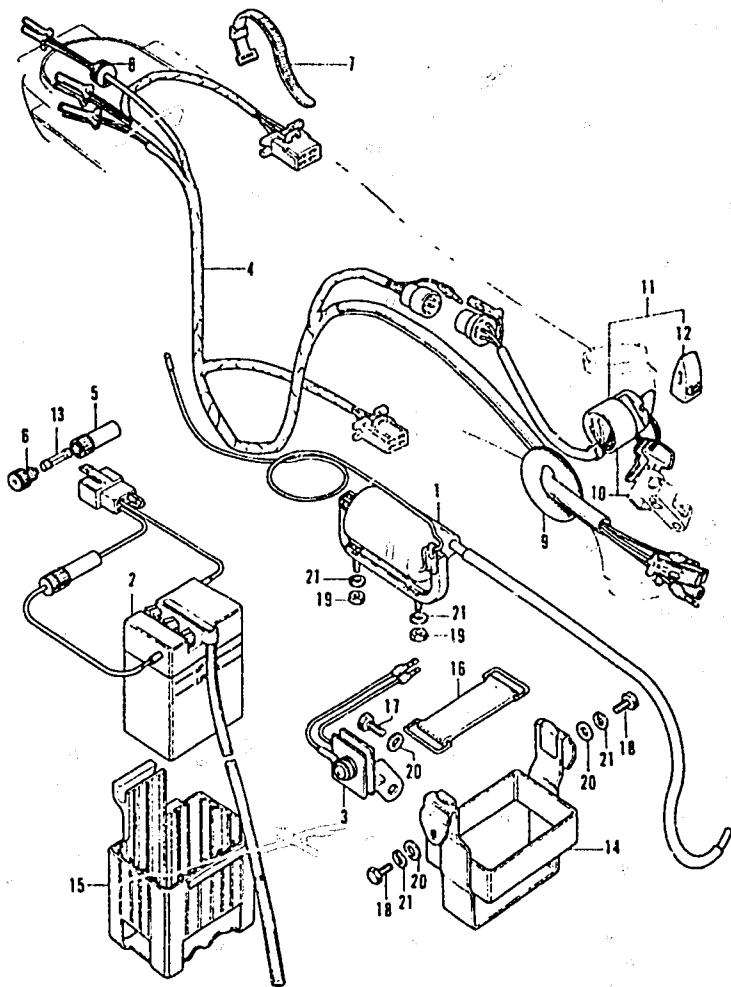


WIRE HARNESS • BATTERY



F23098014

K1 = CT70K1
K2 = CT70K2

Ref. No.	BLOCK NO. F-14 DESCRIPTION	CT70		FRAME SERIAL NUMBER		QTY REQ	PART NUMBER	HONDA CODE
		K1	K2	FROM	TO			
1	COIL ASSY., IGNITION	K1	K2	-----	-----	1	30500-098-671	0114868
2	BATTERY ASSY. (6V-2AH)	K1	K2	-----	-----	1	31500-098-971	0269431
	BATTERY (6N2) (YUASA)	K1	K2	-----	-----	1	31500-147-671	0464172
3	RECTIFIER ASSY.	K1	K2	-----	-----	1	31700-098-016	0269449
	RECTIFIER ASSY.	K1	K2	-----	-----	1	31700-098-305	0965665
	RECTIFIER ASSY.	K1	K2	-----	-----	1	31700-098-921	0267880
	RECTIFIER ASSY.	K1	K2	-----	-----	1	31700-118-771	0290684
4	HARNESS, WIRE	K1	K2	-----	-----	1	32100-098-950	0302679
5	CONNECTOR A, FUSE	K1	K2	-----	-----	1	32106-041-000	0182915
	CONNECTOR A, FUSE (YUASA)	K1	K2	-----	-----	1	32106-041-008	0484121
6	CONNECTOR B, FUSE	K1	K2	-----	-----	1	32112-041-000	0134031
	CONNECTOR B, FUSE (YUASA)	K1	K2	-----	-----	1	32112-041-008	0484139
7	BAND B, WIRE HARNESS	K1	K2	-----	-----	1	32161-286-000	0187427
	BAND B2, WIRE HARNESS	K1	K2	-----	-----	1	95014-62200	0268250
8	GROMMET, WIRE HARNESS	K1	K2	-----	-----	1	32983-011-000	0008730
9	GROMMET, WIRE HARNESS	K1	K2	-----	-----	1	32984-098-000	0114892
10	KEY SET	K1	K2	-----	-----	1	35010-098-950	0393827
	SWITCH KIT, MAIN	K1	K2	-----	-----	1	35012-098-971	0299867
11	SWITCH ASSY., COMBINATION	K1	K2	-----	-----	1	35100-098-951	0388165
	SWITCH, MAIN	K1	K2	-----	-----	1	35100-098-971	0269456
12	CAP, KEY	K1	K2	-----	-----	1	35112-098-670	0201533
13	FUSE (7A)	K1	K2	-----	-----	1	38201-001-000	0008714
	FUSE A (7A)	K1	K2	-----	-----	1	98200-107-1	0250662
14	BOX, BATTERY	K1	K2	-----	-----	1	50325-098-010	0246876
15	RUBBER, BATTERY	K1	K2	-----	-----	1	50326-098-000	0246884
16	BAND COMP., BATTERY	K1	K2	-----	-----	1	50382-098-000	073892
17	BOLT, HEX., 6X3	K1	K2	-----	-----	1	92000-06008	0054155
	BOLT, HEX., 6X8	K1	K2	-----	-----	1	92000-06008-0A	0724377
	BOLT, HEX., 6X8	K1	K2	-----	-----	1	92101-06008-0A	2504868
18	BOLT, HEX., 6X10	K1	K2	-----	-----	2	92000-06010	0054171
	BOLT, HEX., 6X10	K1	K2	-----	-----	2	92101-06010-0A	3307048
19	NUT, HEX., 6MM	K1	K2	-----	-----	2	90310-KA3-711	1553916

F1

CONTENTS

TITLE	PAGE	GRID
AIR CLEANER	60	D11
ALTERNATOR	10	B5
BATTERY	88	F1
BRAKE PEDAL	80	E9
CAM CHAIN TENSIONER	14	B7
CAMSHAFT	8	B4
CARBURETOR	38	C7
CHAIN CASE	78	E8
CHANGE PEDAL	98	F6
CLUTCH	18	B9
CRANKCASE	34	C5
CRANKCASE COVER, L	10	B5
CRANKCASE COVER, R	16	B8
CRANKCASE PROTECTOR	92	F3
CRANKSHAFT	22	B11
CYLINDER	6	B3
CYLINDER HEAD	6	B3
CYLINDER HEAD COVER	2	B1
FENDER, FR	46	D4
FENDER, RR	84	E1
FOH, FR	50	D6
FRAME	92	F3
FUEL TANK	64	E1
GEARSHIFT	26	C1
HANDLEBAR	40	D1
HEADLIGHT	44	D3
HORN	46	D4
INLET PIPE	2	B1
KICK ARM	98	F6
KICK STARTER	32	C4
MUFFLER	66	E2
OIL PUMP	34	C5
PISTON	22	B11
SEAT	60	D11
SHOCK ABSORBER, RR	76	E7
SIDE STAND	80	E9
SPARK PLUG	2	B1
SPEEDOMETER	44	D3
STEERING STEM	46	D4
STEP	80	E9
SWINGARM	78	E8
TAILLIGHT	84	E11
TOOL SET	96	F5
TRANSMISSION	30	C3
VALVE	8	B4
WHEEL, FR	54	D8
WHEEL, RR	70	E4
WIRE HARNESS	88	F1

GRID

F1

CT70K1 ENGINE NO.; CT70E-2000001 TO SUBSEQUENT
 CT70K1 FRAME NO.; CT70-2000001 TO SUBSEQUENT
 CT70K2 ENGINE NO.; CT70E-2100001 TO SUBSEQUENT
 CT70K2 FRAME NO.; CT70-2100001 TO SUBSEQUENT

AMERICAN HONDA MOTOR CO., LTD. 1993 80