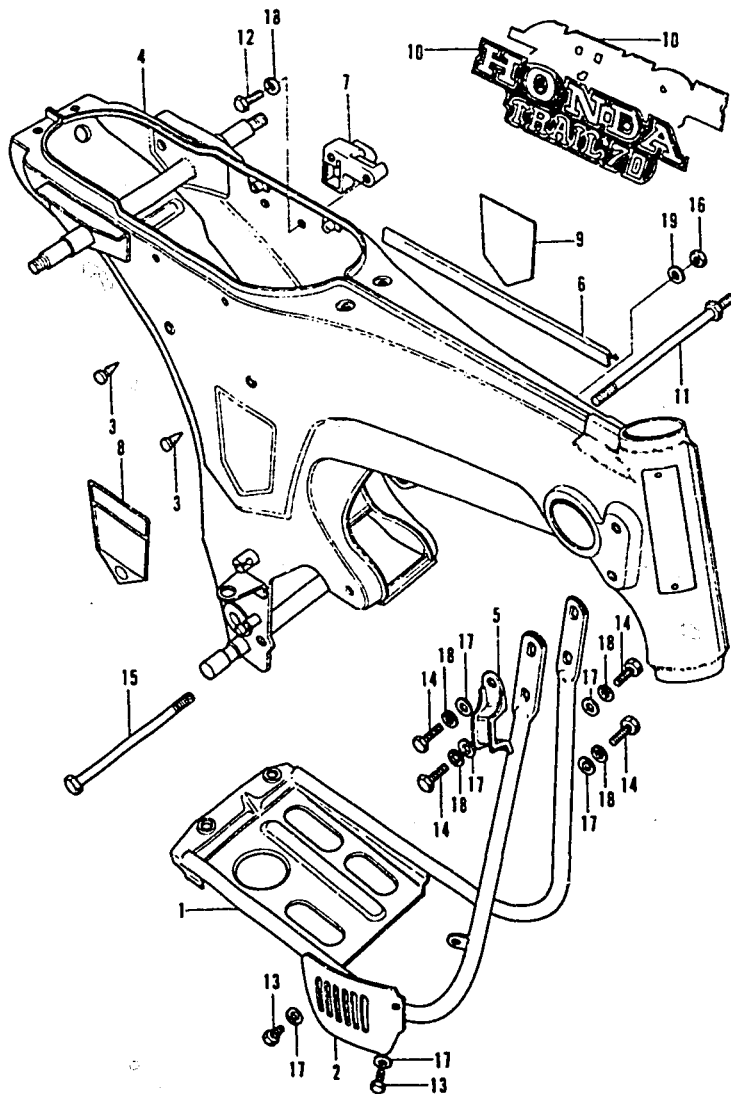


FRAME • CRANKCASE PROTECTOR



F23098015

K1 = CT70K1
K2 = CT70K2

Ref. No.	BLOCK NO. DESCRIPTION	CT70		FRAME SERIAL NUMBER	QTY REQ	PART NUMBER	HONDA CODE
		K1	K2				
1	PROTECTOR, CRANKCASE	K1	K2	-----	1	11911-098-671	0201434
2	PROTECTOR, CRANKCASE	K1	K2	-----	1	11912-098-671	0201442
3	PLUG, HEAD PIPE	K1	K2	-----	2	50049-046-000	0203133
4	FRAME COMP.	K1	K2	-----	1	50100-098-970DD	0306431
	FRAME COMP.	K1	K2	-----	1	50100-098-970NL	0306449
5	CLIP, WIRE HARNESS	K1	K2	-----	1	50191-098-670	0201608
6	MOLE, FRAME	K1	K2	-----	1	50305-098-000	0200071
7	HOLDER ASSY., HELMET	K1	K2	-----	1	50710-110-701	0269480
8	EMBLEM, FRAME R. SIDE	K1	K2	-----	1	87122-098-950	0302885
9	EMBLEM, FRAME L. SIDE	K1	K2	-----	1	87123-098-950	0302893
10	EMBLEM, R. & L. FR.	K1	K2	-----	2	87126-098-950	0306522
11	BOLT A, RR. ENGINE SUPPORT	K1	K2	-----	1	90112-003-000	0011965
12	BOLT, HEX., 6X8	K1	K2	-----	2	92000-06008	0054155
	BOLT, HEX., 6X8	K1	K2	-----	2	92000-06008-0A	0724377
	BOLT, HEX., 6X8	K1	K2	-----	2	92101-06008-0A	2504868
13	BOLT, HEX., 6X10	K1	K2	-----	2	92000-06010	0054171
	BOLT, HEX., 6X10	K1	K2	-----	2	92101-06010-0A	3307048
14	BOLT, HEX., 6X16	K1	K2	-----	4	92000-06016	0054239
	BOLT, HEX., 6X16	K1	K2	-----	4	92000-06016-0A	0313197
	BOLT, HEX., 6X16	K1	K2	-----	4	92000-06016-1A	0915124
	BOLT, HEX., 6X16	K1	K2	-----	4	92100-06016-0A	1685726
	BOLT, HEX., 6X16	K1	K2	-----	4	92101-06016-0A	2479590
	BOLT, HEX., 6X16	K1	K2	-----	4	92200-06016-0A	1842400
15	BOLT, HEX., 8X115	K1	K2	-----	1	90052-723-750	0904904
	BOLT, HEX., 8X115	K1	K2	-----	1	92000-08115	0203463
	BOLT, HEX., 8X115	K1	K2	-----	1	92000-08115-0A	0336107
	BOLT, HEX., 8X115	K1	K2	-----	1	92200-08115-0A	0857151
16	NUT, HEX., 8MM	K1	K2	-----	2	94030-08000	0114686
17	WASHER, PLAIN, 6MM	K1	K2	-----	6	94101-06000	0059071
	WASHER, PLAIN, 6MM	K1	K2	-----	6	94101-06080	3136074
	WASHER, PLAIN, 6MM	K1	K2	-----	6	94101-06800	0345900
18	WASHER, SPRING, 6MM	K1	K2	-----	6	94111-06000	0058974

CONTENTS

TITLE	PAGE	GRID
AIR CLEANER	60	D11
ALTERNATOR	10	B5
BATTERY	88	F1
BRAKE PEDAL	80	E9
CAM CHAIN TENSIONER	14	B7
CAMSHAFT	8	B4
CARBURETOR	38	C7
CHAIN CASE	78	E8
CHANGE PEDAL	98	F6
CLUTCH	18	B9
CRANKCASE	34	C5
CRANKCASE COVER, L.	10	B5
CRANKCASE COVER, R.	16	B8
CRANKCASE PROTECTOR	92	F3
CRANKSHAFT	22	B11
CYLINDER	6	B3
CYLINDER HEAD	6	B3
CYLINDER HEAD COVER	2	B1
FENDER, FR.	46	D4
FENDER, RR.	84	E11
FORK, FR.	50	D6
FRAME	92	F3
FUEL TANK	64	E1
GEARSHIFT	26	C1
HANDLEBAR	40	D1
HEADLIGHT	44	D3
HORN	46	D4
INLET PIPE	2	B1
KICK ARM	98	F6
KICK STARTER	32	C4
MUFFLER	66	E2
OIL PUMP	34	C5
PISTON	22	B11
SEAT	60	D11
SHOCK ABSORBER, RR.	76	E7
SIDE STAND	80	E9
SPARK PLUG	2	B1
SPEEDOMETER	44	D3
STEERING STEM	46	D4
STEP	80	E9
SWINGARM	78	E8
TAILLIGHT	84	E11
TOOL SET	96	F5
TRANSMISSION	30	C3
VALVE	8	B4
WHEEL, FR.	54	DB
WHEEL, RR.	70	E4
WIRE HARNESS	88	F1

CT70K1 ENGINE NO.; CT70E-2000001 TO SUBSEQUENT
 CT70K1 FRAME NO.; CT70-2000001 TO SUBSEQUENT
 CT70K2 ENGINE NO.; CT70E-2100001 TO SUBSEQUENT
 CT70K2 FRAME NO.; CT70-2100001 TO SUBSEQUENT