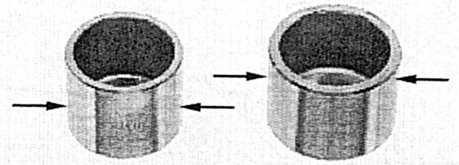


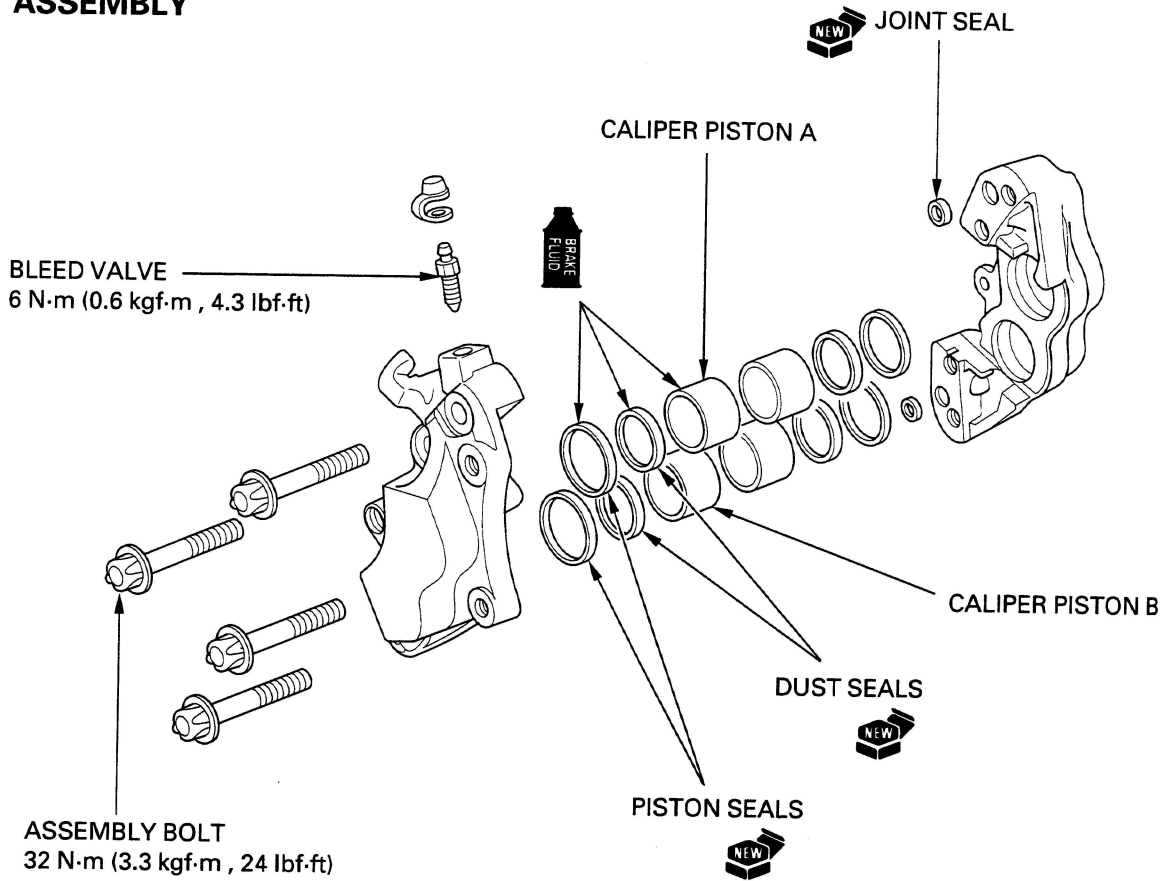
# HYDRAULIC BRAKE

Measure the caliper piston O. D.

**SERVICE LIMITS:** **Piston A:** 30.14 mm (1.187 in)  
**Piston B:** 26.91 mm (1.059 in)



## ASSEMBLY



Coat new piston and dust seals with clean brake fluid and install them in the seal grooves in the caliper.

Coat the caliper pistons with clean brake fluid and install them into the caliper cylinders with the opening toward the pads.

Install new joint seals into the fluid passage grooves in the caliper body.

